

POTS Line Replacement Build-in (4G) module.

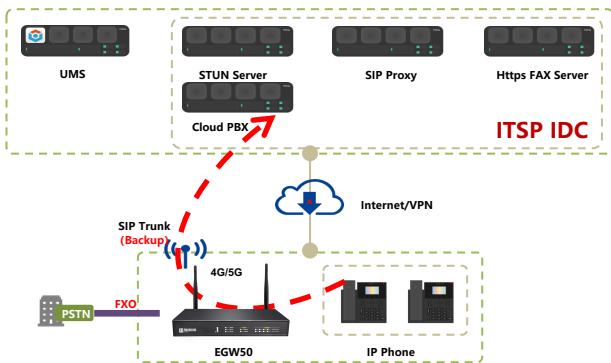
As traditional landline telephone services, Plain Old Phone System POTS, are being phased out, businesses are seeking alternative connectivity solutions for their analog voice and specialty line needs. The POTS Replacement Solution, powered by Redstone EGW50, is specifically designed to transition analog voice and specialty lines, such as alarms, call box, to the cloud, providing a streamlined and modernized solution.

With the rapid development and widespread adoption of SIP Trunking and cloud PBX, businesses now have the opportunity to implement cost-effective office telephony systems based on cloud/hosted PBX. Additionally, to ensure call reliability during cloud/hosted server disconnection or network/power failures, the EGW50 can be deployed on-premise in offices or households to handle calls during emergencies.

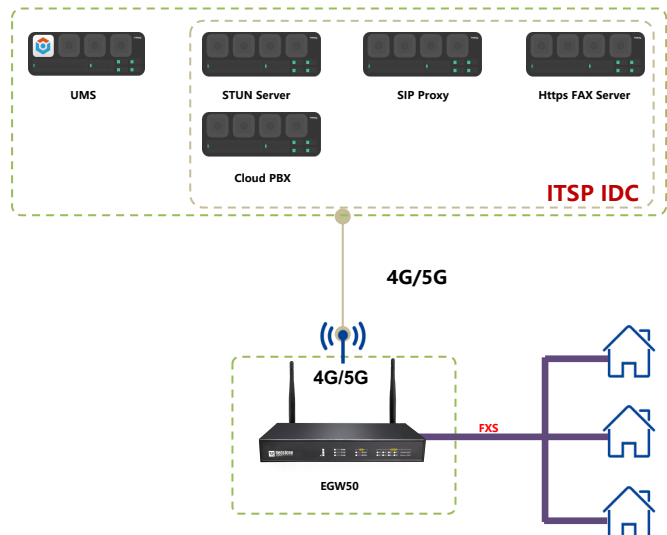


The Survivability Hero

Application---Local Survivability



Application---POTS Line Replacement



Key Benefit

- Network failover with built in- 4G/5G module
- Power failover, under LTE mode, the maximum battery life for one single call is 12 hours
- Built-in FXO port for local PSTN connection*



Built-in 4G



250 Extensions



Highly Compatible



Automatic Sitchover



Emergency Call

* Only available on FXO model

Key Benefit

- Compatible with all kinds of analog terminals, such as elevator alarm, security alarm, emergency call box, access control, FAX, fire alarm, etc
- Enterprise-grade hardware
- Unified management and remote access for batch configuration and trouble shooting, support GPS and control of multi-location outdoor devices

Specifications

Protocols

Call Control	SIP,IMS
Network	TCP/IP,HTTP,DHCP server,DHCP client,PPPoE client end DNS client end (A/SRV record),RTP/RTCP,STUN/NTP client

Media

Codecs	G.711 (a/μ),G.729a
DTMF	In-band audio,RFC2833,SIP-INFO G.711 pass-through,T.38
FAX	T.38 compliant Group 3 Fax Relay Maximum fax rate of 33,600 bps (pass-through/T.38 V3)

Voice

Calling	Outbound/inbound calling of IP terminals
Call Barring	Internal,local,domestic,international,prohibited
Call Forwarding	Unconditional,on busy,or no answer
Call Transfer	Blind,or consultant
Auto Switchboard	Auto attendant,greeting,background music
DID to Huntgroup	Sequential order,Round-robin order or simultaneous ringing,Call queue

Security

Encryption	HTTPS,SSH,TLS/SRTP
Device Management Security	Support user hierarchical authorization management
VPN Client	L2TP,OpenVPN
Network Redundancy	Support 4G and wired broadband as backup to ensure uninterrupted network communication
Routing Features	NAT conversion,DHCP service,DNS proxy,static route,virtual server,DMZ,IP and MAC binding,QoS bandwidth guarantee

Local Survivability

Voice Proxy	Be able to set 2 proxy servers with UDP/TCP/TLS transmission
Heartbeat Detection	Be able to set a detection interval
Emergency Call	Max 4
Call Authentication	Prevent unregistered users to make calls

Remote Management

Device Management	Redstone UMS,third-party device management systems (SNMP,TR-069,TR-104 and TR-106)
Auto Provisioning	Download configuration file via TFTP/FTP/HTTP/HTTPS,Obtain ACS address via DHCP option 66 or redirection
Configuration	Remote upgrade via Web

Upgrade	Bulk import/export Version
Administration & maintenance	SSH

4G Frequency Bands

LTE-FDD	B2/B4/B5/B12/B13/B14/B66/ B71
LTE-TDD	\
WCDMA	B2/B4/B5
GSM/EDGE	\
GNSS	GPS/GLONASS/BeiDou (Compass)/Galileo/QZSS (Optional)

Certifications

Carrier	North America: Verizon/AT&T/ T-Mobile/U.S. Cellular Canada: Rogers/Telus
Regulatory	Global: GCF North America: FCC Canada: IC
Others	RoHS/WHQL

Hardware

Voice ports	6FXS/2FXO,4FXS/4FXO,8FXO
4G module	FDD-LTE,providing fast LTE WAN link,different modules can be selected according to user requirements to support different network standards
Network ports	2 x 10/100/1000M adaptive Ethernet ports 1×LAN port 1×WAN/LAN port (support WAN port and LAN port switching)
SIM card	1.8V/3.0V Adaptive
CPU	880MHz
RAM	256MB
Flash	32MB
Internal storage	16GB
Weight (net)	1.2kg
Power	12 VDC/2A
Mounting	Desktop/ Rackmount
Power consumption	18W
Operating conditions	Temperature: 0°C to 40°C, Humidity: 10% to 90% RH (non-condensing)
Storage conditions	Temperature: -40°C to 70°C, Humidity: 5% to 90% RH (non-condensing)