

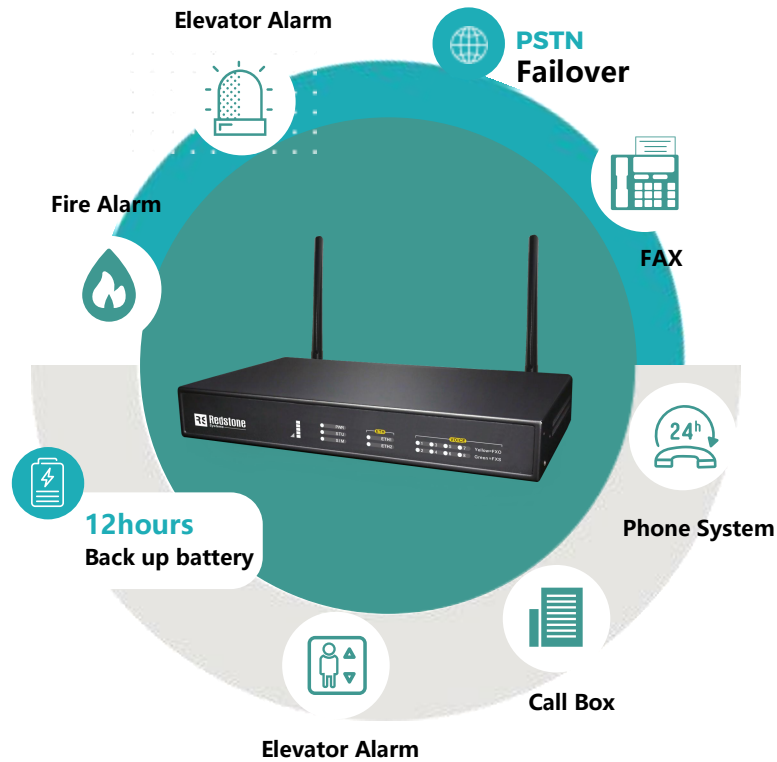
...

POTS LINE Replacement

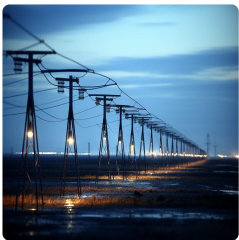
The Plain Old Telephone Service (POTS) is gradually being phased out in many areas as telecommunications companies shift towards modern digital and internet-based communication technologies.

This transition is driven by the increasing popularity of mobile phones, VoIP (Voice over Internet Protocol) services, and digital communication platforms, which offer **more advanced features, cost savings, and greater flexibility.**

As a result, many traditional landline telephone networks are being replaced with digital infrastructure or discontinued.



What are the impacts?



Phone System

Many businesses are increasingly favoring VoIP services. It eliminates the need for copper wires, telephone lines, or excessive hardware. POTS replacements also offer great scalability. With a cloud-based system, adding or removing users is easily manageable.



Elevator

In the U.S., the current elevator code mandates that all elevators must have a dedicated phone line, and a cellular elevator phone line fulfills this requirement. This shift applies to both new and existing elevators, simplifying the process of replacing POTS lines.



Fire Alarm

The alarm system normally utilizes two communication methods: the primary one operates through the local internet connection, while the secondary connection is through cellular.



FAX

Customers who transition to an online fax solution allows them to send a fax from virtually anywhere, using any device. Opting for a cloud-based faxing solution avoids the endless cycle of paper-based workflow, saving time spent on scanning, faxing, and filing.

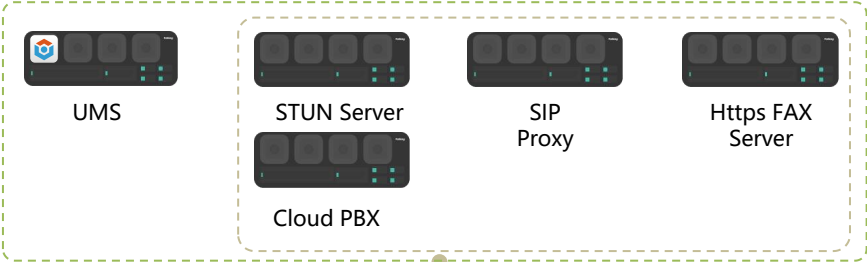
...

Save Cost with POTS Replacement Solution

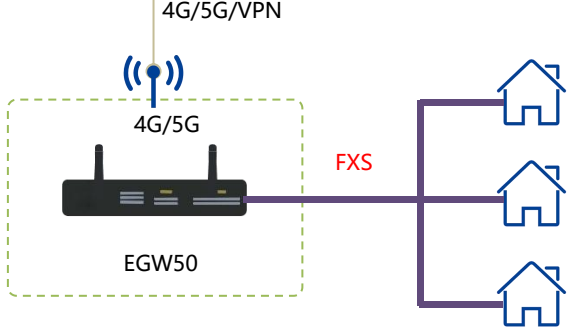


EGW50

8FXO, 6FXS/2FXO,4FXS/FXO



- Build-in 4G
- 250 Extensions
- Highly Compatible
- Automatic Switchover
- Emergency Call



Simple Installation and Management

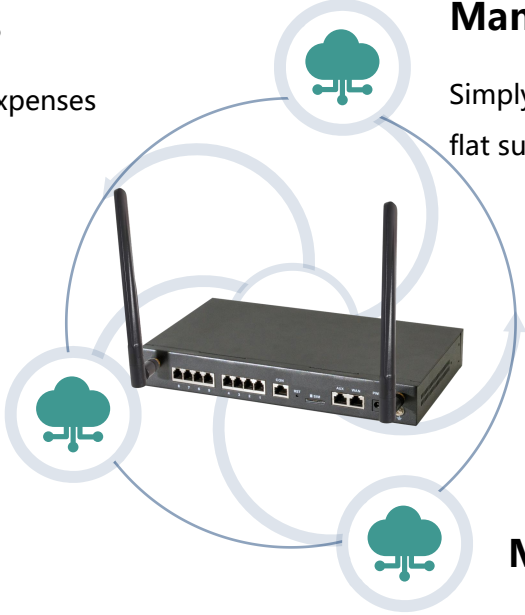
Simply mount it on a wall or place it on any flat surface

Incredible Cost Savings

Reduce your monthly phone bill expenses from POTS line subscription

Backup Power & UPS

EGW50 remains a minimum of 12 hours for 1 phone call during power outages



Remote Management

Pre-configured and easily managed online by Redstone unified management system

Multiple Failover Mode

Build-in 4G module for internet/network failover